

Spare part

- 1- Fuel filter/ Quantity = 10
- 2- Oil filter / Quantity = 10
- 3- Air filter / Quantity = 10
- 4- Mechanical Seal Quantity / 2

4000 GPM / WATER PUMP

Portable skid mounted fire fighting pumps

Engine specifications

Fire pump skid rated at 500 HP , tier 3 emissions rating 4000 GPM/ 12 Bar pressure 14:5 CFM engine driven air compressor , lift frame air receiver with four air outlets, mounting flanges for manifolds .

RPM : 1500-2000

Cooling fan and guard

Inter cooled, with radiator

Air start with lubricator and quick open valve working pressure (100-150) PSI

Couple to the pump via manual operated clutch with lever

Twin disc power take off

Short coupled drive shaft with slip yoke and heavy-duty universal joint pump to pto with heavy duty drive shaft guard.

Control panel equipped with oil pressure, water temperature, air pressure, fuel pressure, fuel pressure suction, discharge gauges, electronic throttle, emergency kill and tachometer with hour meter.

Enclosed battery box with lock

Engines oil drain plumbed to edge of skid for easy access.

Start stop button local control panel with engine throughling knob and emergency (S.O).

Built in (24-volt) alternator and illumination system.

Structural skid.

Heavy (C-IRON) or plated (C-FRAME) to carry the pump and engine with integrated fuel tank peneth the engine , the fuel automatically feed into engine fuel system ,fuel tank capacity not less than (300 LTR).

Easy to deploy from trailer or loaders

Nonskid expanded metal decking.

Forklift pockets

Oil field end for tail boarding.

Single point lifts eye and four point lifting connection on corners.

6" pipe frame and enclosure to protect motor and pump.

Fuel connection mounted to edge of engine pump skid.

Suction hose storage rack on skid frame complete with chain and binder tie downs attached skid.

Suction hose support arm.

Air hose manifold system located for easy starting and operation.

Pumps

Centrifugal pump.

Horizontal.

Split case pump (12" * 10" or 8") rated at 4000 GPM

Body of volute / cast iron.

Bronze weir rings and impeller.

Stainless steel shaft.

Working as water lifting form surface pond, with at (6 MTR) NPSH.

With Auto priming pump.

Manifold

Suction and Discharge manifold : gear operated butterfly valve on discharge side of priming pump with hammer union wing 6 " hammer union thread for easy discharge manifold connection.

Year of manufacture in 2023 and above

Set operation and maintenance and spare part manuals

Note

USA , Western European , Japan , Canada Origin

Spare part

- 1- Fuel filter/ Quantity = 10
- 2- Oil filter / Quantity = 10
- 3- Air filter / Quantity = 10
- 4- Mechanical Seal Quantity / 2

DIESEL AIR COMPRESSOR

1-DIESEL ENGINE, SKID MOUNTED, WATER, COOLED
2-SELF STARTER, SCREW TYPE
PRESSURE 12 BAR
CAPACITY / (200-250) CFM
WORKING TEMP (-5 TO 55) C
SYSTEM FOR COMPRESSOR: OIL COOLING
HOSE CONECCTED FROM (3/4-1/2) INCH
HOSE 3/4 INCH LENGTH 10 MTR Q/ 2

SPARE PART FOR ENGINE
OIL FILTER / Quantity / 20
FUEL FILTER / Quantity / 20
AIR FILTER / Quantity / 20
ELECTRIC STARTER / Quantity / 1
KIT OF OVERHAUL FOR FUEL INJECTION PUMP

SPARE PART FOR AIR COMPRESSOR
ALL FILTER (OIL , AIR) / Quantity / 5
OIL 20 LITTER

USA OR WESTERN EUROPEAN OR JAPAN CANADA ORIGIN

Year of manufacture in 2023 and above

Sets operation and maintained manuals and spare part manuals

Discharge hose specifications

Construction : polyester jaket, circular woven, twill weave inside lining of EPDM- rubber.

Characteristics: economical, flexible, light- weight, space saving, weather resistant , rot and mildew ptoof, resistant to aging , ozone, sea water and many chemicals,good abrasion resistance . general purpose fire hose for pump and vehicles.

Test pressure : 25 bar

Bursting pressure : 50 bar

Size (4" *20 mtr , 6" * 20 mtr , 8" * 15 mtr)

USA , ITALY , GERMANY ORIGIN

Year of manufacture in 2023 and above

Hammer unions specifications

Kind fig (100) union

size	Nut radius(inches)	Length total (inches)	Pressure working(PSI)	Pressure test (PSI)	Weight (LBS)
4	4.7	4.94	1000	1500	19.42
6	6.5	6.84	1000	1500	46.21
8	7.87	7.31	1000	1500	69.88

- These hammer unions are used in low pressure manifold line and air, water, oil or gas application.
- Available in both threaded and butt weld ends
 - Metal to metal sealing surface.

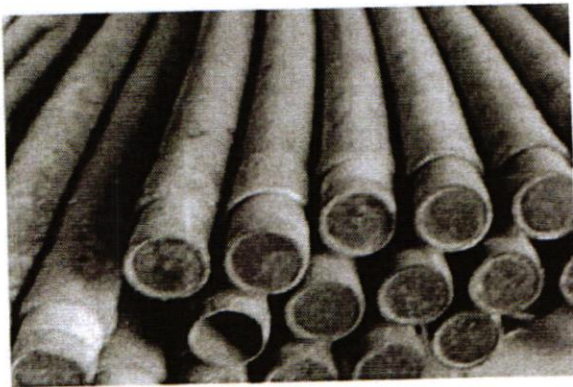


Suction hose specifications

hard rubber flexible hoses round threads , oil resistant pressure working (200 psi) complete with hammer union .
size (6" * 4 mtr and 8" * 3 mtr)

USA , ITALY , GERMANY ORIGIN

Year of manufacture in 2023 and above



4- Drawings

٤- المخططات

Bid documents [Insert "include" or "does not include"] drawings.

وثائق العطاء هذه [ادخل "تتضمن" أو "لا تتضمن"] مخططات.

[ادخل قائمة المخططات الآتية إذا كانت هذه الوثائق سيتم تضمينها]

[Insert the following list of drawings if these documents will be included]

قائمة المخططات		
الغرض	اسم المخطط	رقم المخطط

List of Drawings		
No. of Plan	Name of Plane	Purpose

5- Test and Engineering Inspection ٥- الاختبار والفحص الهندسي

The following tests and engineering inspections will be conducted: [Insert list of tests and engineering inspections]

سيتم إجراء الاختبارات والفحوص الهندسية الأتية: [أدخل قائمة الاختبارات والفحوص الهندسية]

قائمة الاختبارات والفحص الهندسي		
الاختبار و/أو الفحص الهندسي	وصف ملخص لكل بند	رقم البند
خطة الفحص المصنعي	تجهيز مضخات إطفاء حرائق رؤوس الابار النفطية والهوزات والتوصيلات	١
شهادات الفحص المصنعي مصادقة من قبل طرف فاحص ثالث مصنعي معتمد من قبل وزارة النفط		٢
حضور الفحص المصنعي لعدد (١) شخص (الفحص الهندسي)		٣
الجدول الزمني للفحوصات المصنعية		٤
شهادة فحص UL		٥

List of Tests and Engineering Inspections		
Item No.	Brief Description of each Item	Test and/or Engineering Inspection
1	6000 GPM/ water pump portable skid mounted fire pumps	ITP
2		The mill certificate shall be approved by one of the third-party companies that approved by the ministry of oil
3		Mill monitoring by (1) engineers from engineering inspection department
4		Time Schedule for FAT
5		Inspection certificate (UL)